



Quick Installation Guide

SmartMotion™ models: 1.0, 2.0, 3.0



Nationwide Customer Service

Phone 1.888.550.3746
Fax 1.805.979.9399
Email info@ergomotion.com
Web www.ergomotion.com

BASE SETUP

See Owner's Manual for complete operating instructions.

PART LIST

Before discarding the packing materials- ensure all the parts are accounted for. Some parts may be attached to the base or inside boxes, please inspect carefully.

Only included in split bases:



(1) Connecting Strap



(1) SmartSync Cord

Optional Equipment:
(not included)

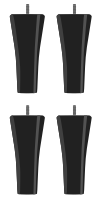
- Surge Protector
- (2) 9V Batteries



(1) Wireless Remote



(3) AAA Batteries



(4) Legs & Washers



(1) Power Cord



(1) Power Supply



(1) Power Down Box

STEP 1

Always use two people when setting up the base.

Place the bed base box in a desired location with the bottom of the box facing up.

Remove the binding straps and packing materials, making sure not to puncture the box with any sharp objects.



STEP 2

If installing a headboard, please see headboard bracket installation instructions in Owner's Manual.

Install the legs by threading the washer over the bolt of the leg with the recessed side facing the leg, and tighten by hand. **Do not over tighten.**

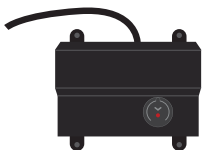


STEP 3

To sync two bases with the SmartSync™ cord - see installation instructions in Owner's Manual

Uncoil the Power Down Box from the frame and install (2) 9 Volt batteries- not included.

Place box on the ground. Ensure that it is easily accessible when the base is turned to its upright position.



STEP 4

Uncoil input cord (connected to control box's power port) and plug into Power Supply.



STEP 5

Uncoil the Power Cord and connect to the Power Supply. Place Power Supply on the ground and extend from the base. Ensure that the Power Supply and all attached cords are directed toward the desired surge protector.



STEP 6

Carefully flip the base over on to its legs. **Important:** Two people are required to move the bed base. Do not drag across the floor. Do not rest frame on its side, excessive pressure may damage the legs.

STEP 7

Plug the base and into a power source. **A surge protector is strongly recommended.**

STEP 8

Install (3) AAA batteries in remote control. Quickly test functions to verify proper setup before placing mattress on base. Press FLAT to return the base to a flat position.



STEP 9

Place the mattress on the base.

Select Beautyrest® mattresses* are compatible with the mattress retainer attachment panel installed on the SmartMotion™ bases



*If the mattress is not compatible with the attachment panel, a mattress retainer bar is available for purchase at: 1-888-550-3746



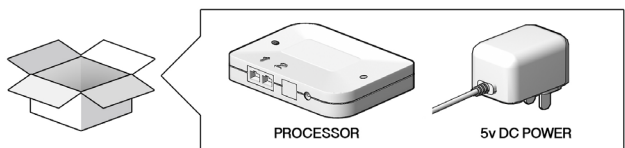
Test all functions on the base to ensure proper setup. For more information please see Owner's Manual

For customer support, visit www.ergomotion.com or call: 1-888-550-3746

Sleeptracker® SETUP

PART LIST

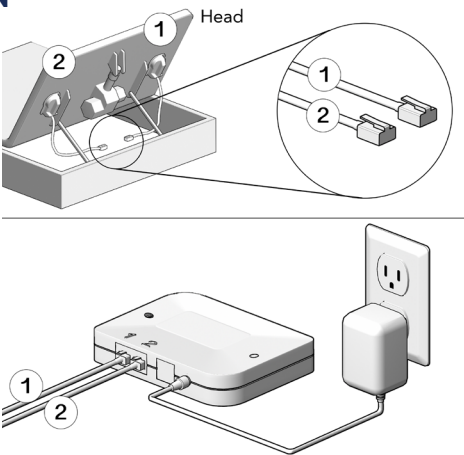
*King bases will have a spare processor and 5v DC Power



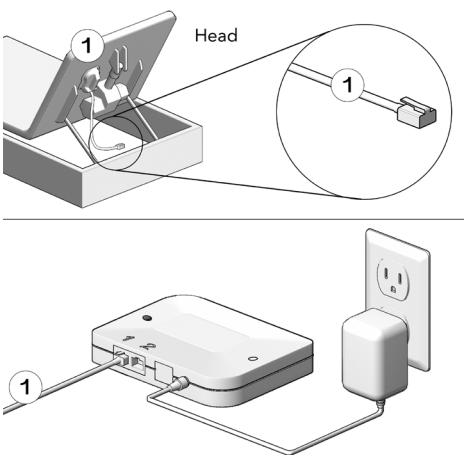
Please refer to Beautyrest Quick Start Guide for Sleeptracker® download and setup instructions.

Visit help.beautyrest.com from your smartphone to download the app and view additional Sleeptracker® product information.

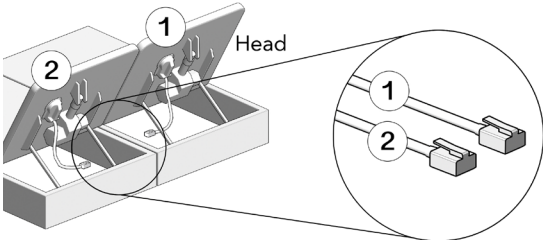
QUEEN



TWIN



KING



Both sensors plug into a single common processor

